
Lufkin/Hudson Town Loop Alternative

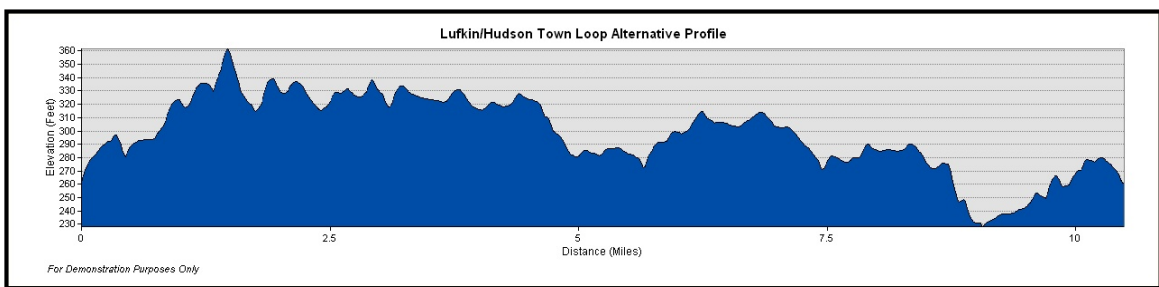
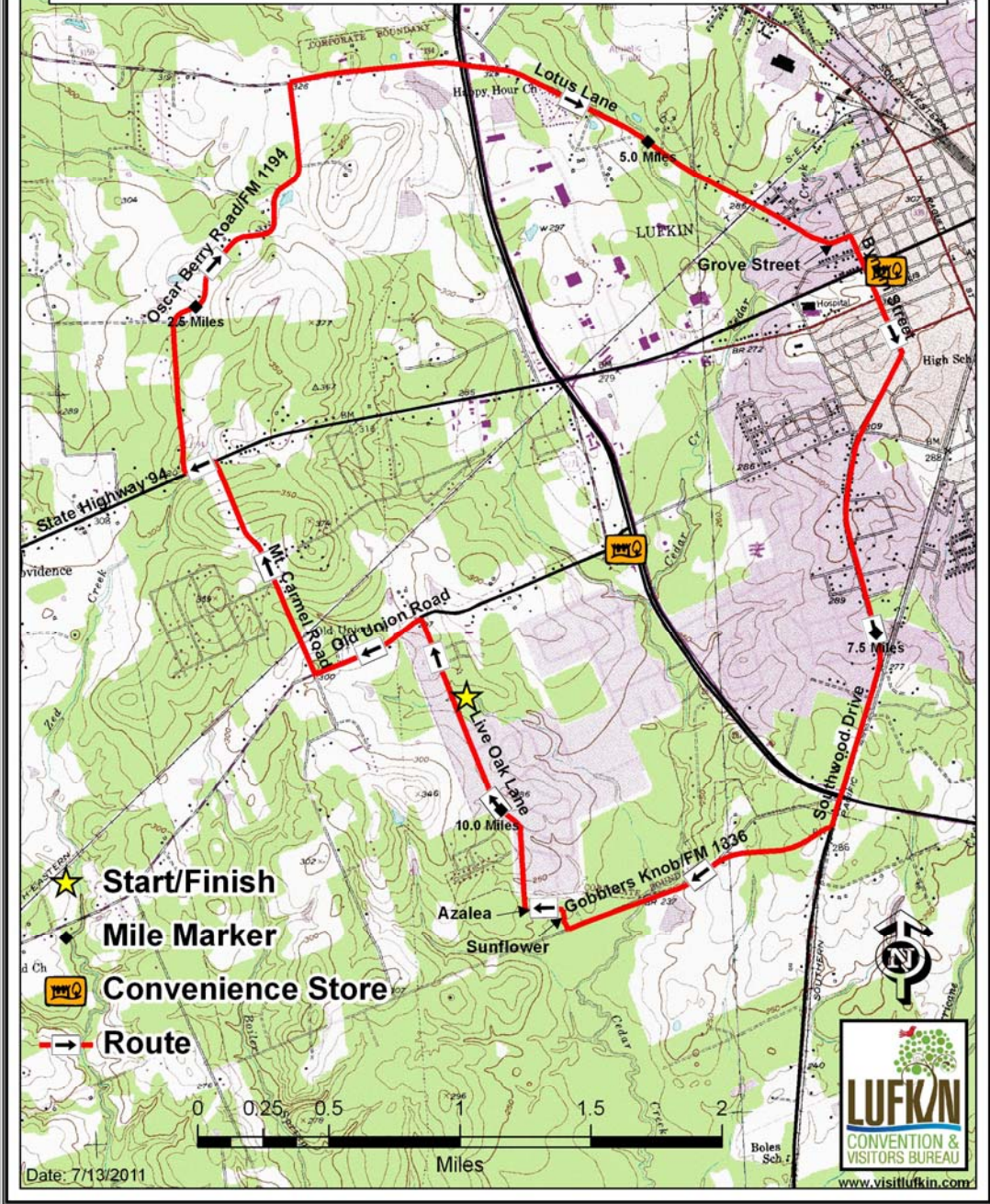
Lufkin & Angelina County Bicycle Route

Total Miles: 10.5



www.visitlufkin.com

Lufkin/Hudson Town Loop Alternative: 10.5 Miles



Lufkin/Hudson Town Loop Alternative

Route Directions: Lufkin/Hudson Town Loop Alternative

Segment Distance (miles)	Direction of Turn	Road Traveled	Total Distance (miles)
Start		Brookhollow Elementary School (1009 Live Oak Lane)	0.0
0.3	Right heading North	Live Oak Lane	0.3
0.5	Left heading West	Old Union Road	0.8
1.0	Right heading North	Mt. Carmel Road	1.8
0.1	Left heading West	State Highway 94	1.9
1.8	Right heading North	Oscar Berry Road/FM 1194	3.7
2.2	Right heading East/Southeast	Lotus Lane/Farm-To-Market Road 1194	5.9
0.1	Left heading East	Grove Street	6.0
0.8	Right heading Southeast	Bynum Street	6.8
1.6	Continue Straight heading South	Southwood Drive	8.4
1.1	Right heading Southwest	Gobblers Knob/Farm-to-Market Road 1336	9.5
0.1	Right heading North	Sunflower	9.6
0.1	Left heading West	Azalea Street	9.7
0.8	Right heading North	Live Oak Lane	10.5
Finish		Brookhollow Elementary School (1009 Live Oak Lane)	10.5

Emergency Contact Information:

Angelina County Sheriffs Office	(936) 634-3331
Lufkin Police/Fire/EMS	(936) 633-0356
Memorial Health System of East Texas - Lufkin	(936) 634-8111
Woodland Heights Medical Center - Lufkin	(936) 634-8311
Checkerboard Taxi	(936) 639-4911

Route Summary:

The Lufkin/Hudson Town Loop Alternative decreases the original Town Loop by 7.5 miles, but is still a great beginning ride for cyclists new to the sport. There are not as many hills to climb, but instead more hills to descend creating a fun and enjoyable ride. This route stays even closer to town making it ideal for a quick workout during the day.

Start/Finish:

This route begins at Brookhollow Elementary School at 1009 Live Oak Lane. There is plenty of parking next to the school. During the months when students are not attending classes parking should not be an issue, but when students are attending classes cyclist are encouraged to contact the school at (936) 634-8415 to inquire about parking accommodations.

If cyclists need to use the **restroom** or pick up supplies before departing, it is suggested that they use the West Loop Chevron Station located just east of the departure point at the corner of Old Union Road and John Redditt Drive/Loop 287.

Resources:

It is advised that all cyclists obtain the appropriate food and water resources before departing. Distances between commercial resources to restock can be vast, and therefore can result in an unpleasant experience if cyclists are not prepared. There are convenience stores located throughout the route, and are identified on the map. Riders should plan to utilize these resources in order to rest, refuel, and use the restroom.

Special Considerations:

Angelina County offers great opportunities for cyclist to experience the Pineywoods Region of East Texas. However, there are special considerations that need to be taken in order to ensure a pleasant and memorable ride. Such considerations include numerous water crossings, narrow roads, and agricultural activities.

Water Crossings

Angelina County is fortunate to have many streams, rivers, and lakes but this can cause unsafe road conditions for cyclist. The narrow bridges that cross these features often have no shoulders which can lead to close interactions between motorists and cyclists. The most notable for this particular route are the stream crossings along the Farm-to-Market Roads.

Narrow Roads

With the exception of Highway 94, the other Farm-to Market Roads, and the roads within the city limits, do not provide a wide shoulder for cyclist to ride on. These roads can also have narrow turns that limit visibility, and have rough surfaces. Cyclists are encouraged to ride single file when encountering these obstacles.

Agricultural Activities

Farming, ranching, and logging are important economic activities that occur throughout Angelina County. These industries require large trucks that haul substantial loads; especially on the narrow Farm-to Market Roads. These large trucks make it difficult to provide plenty of room for cyclist, and they can often times shed various debris. Cyclists are encouraged to ride with a mirror so they can see these obstacles coming.

Safety:

The Lufkin Convention and Visitors Bureau, and its affiliates, assume no responsibility to the cyclists who wish to partake in this activity. They also do not provide any guarantees regarding the accuracy of the proposed mileage and road conditions. Every cyclist is responsible for confirming the route and ensuring their own safety.

The proposed route does utilize public roads that are open to motor vehicle traffic, and therefore cyclists should obey all traffic laws and ride at their own risk.

It is highly recommended that all cyclists use extreme caution when riding, wear helmets, and have rear view mirrors.

Despite the convenience stores located on this route, cyclist should still carry their own food and water, emergency supplies, cell phone, and some form of personal identification.

Climatic conditions can also change suddenly and therefore cyclist should plan accordingly.

Always let someone know where you are going and your approximate departure and arrival times.

Enjoy the Ride!

For any comments or updates to this ride, please contact Aaron Friar, LCVB Trails Coordinator at 936-633-0364 or afriar@cityoflufkin.com